



CHRISTOPHER CHARLES BENNINGER ARCHITECTS



[www.ccba.in](http://www.ccba.in)

# Lodha Belmondo Housing

Pune, India

98 Acres

5,72,500 sq. m





# Staff Housing Indian Institute of Technology

Hyderabad, India

5.5 Acres  
1,00,000 sq. m



# Bajaj Brand View Corporate Office

Pune, India

1.5 Acres

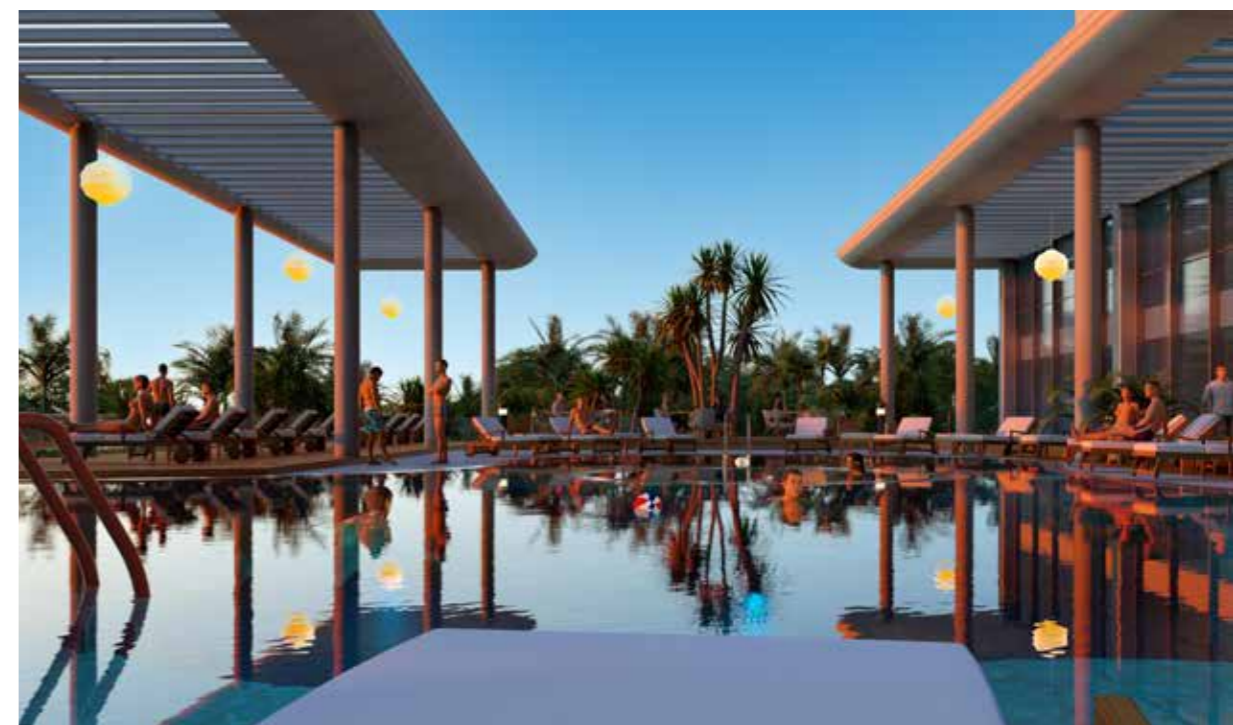
32,800 sq. m



# Luxury Hotel

Gopalpur, India

5.19 Acres  
20,000 sq. m



# Samundra Institute of Maritime Science

Lonavala, India

33 Acres

21,000 sq. m



# Federation Enclave Housing Complex

Aizwal, India

5.5 Acres

50,000 sq. m





# Azim Premji University

Bengaluru, India

71.5 Acres

3,75,000 sq. m



# Suzlon One Earth Global Corporate Headquarters

Pune, India

10.5 Acres  
75,800 sq. m



# New Parliament Complex

Burundi, Africa

44.50 Acres

68,000 sq. m



# New Secretariat Complex

Burundi, Africa

84.10 Acres

2,63,000 sq. m



# Pune Metro Stations

Pune, India



# Bajaj Institute of Technology

Nagpur, India

35.8 Acres

23,300 sq. m



**Foundation Center  
CEPT University**

Ahmedabad, India

17 Acres  
5,000 sq. m



# Mahindra United World College

Mulshi, India

120 Acres

20,000 sq. m



Christopher Charles Benninger Architects (CCBA) is a world renowned multiple award winning Architectural design & planning firm founded in 1995. The firm operates from its iconic office 'India House' in Pune, India. The firm is headed by its Founder Chairman and Principal Architect Prof. Christopher Charles Benninger who was educated at Harvard University and MIT, Massachusetts. CCBA is supported by an extremely talented and experienced team led by its Managing Director Ramprasad Akkiseti, Directors Rahul Sathe and Ar. Daraius Choksi, CEO Ar. Aditya Jeswal along with long time associates and senior architects Ar. Shivaji Karekar, Ar. Noel Jerald, Ar. Rahul Deshmukh, Ar. Sundar Bommaji, Ar. Bhargav Khurjekar and Ar. Mandar Mhaskar.

CCBA has projects ranging from master planning of capital cities and new towns to housing developments and complexes, hotels, and resorts, educational and institutional campuses and corporate headquarters and healthcare with the projects located pan India and abroad.

CCBA is the recipient of over 70 National, State and International awards. It is the only firm to have received 6 awards from the Indian Institute of Architects besides awards from various reputed design forums. CCBA is a design practice like no other.

With its unique designs and concepts, a talented team of architects and investments in latest technologies, CCBA is focussed on becoming a partner in realising your vision.

### OUR ESTEEMED CLIENTS



### LEGACY

*In an isolated tribal village, in the state of Mizoram, on India's border with Burma I came across a hand painted sign that read, "You have traveled so far to come here, you must leave something behind, good or bad!" I suppose as architects and designers we leave behind a large footprint. For better or worse, it is a kind of 'endowment for the future.' We plan cities, build campuses, create stone and concrete reliefs, and we shape the way people teach and learn. We are there when people die and when they cry. We are there years after we die when they laugh and make love. While we can 'go on' to the next project and our buildings often change owners, the inheritor of our 'built wealth' (or poverty) is the user community of our buildings and spaces. It is humanity! Let us hope that our humble legacy becomes a considered endowment for the future. The buildings we make are our lien on eternity.*

Prof. Christopher Benninger





**'INDIA HOUSE', 53 Sopan Bagh, Balewadi, Pune-411045, INDIA  
+91 8446004466 +91 9823276791 ram@ccba.in www.ccba.in**